

# SMS Short Message Service



## Short Message Service – Wireless Messaging

### Feature Overview

#### Secure Communication

- *SMS is virus secure*
- *SMS is secure against external access*
- *Fault tolerant option through the use of several SMS boxes and providers*

#### High Functionality

- *TOPCALL SMS supports more than the usual 160 characters*
- *Send confirmations can be done via SMS*
- *Incoming SMS messages are sent directly to users in Lotus Notes, Microsoft Exchange and Novell GroupWise*

#### Advantages Compared to "Earthbound Solutions"

- *SMS direct to the mobile provider is faster*
- *SMS direct to the mobile provider is cost effective*
- *If the "earthbound communication" breaks down, it is still possible to send SMS messages*

**SMS has established itself** as a standard means of communicating between employees, with partners and in many cases with customers. The number of SMS messages being sent and received continues to increase, and SMS has developed as the ideal communication service for the transmission of mission-critical alerts, notifications and simple messages.

#### The SMS Solution

In contrast to many other SMS solutions on the market, TOPCALL provides direct access to the mobile provider. This offers several advantages in comparison with "earthbound solutions" which use the Internet as the transmission method to the mobile provider. The direct connection makes it possible to send messages even when the fixed connections are not functioning. And since there are no third party connections to the provider, SMS messages are sent faster and more secure. Additionally, the direct communication to the GSM provider is often cheaper. Several SMS boxes may be used in order to maximise throughput and stability. TOPCALL Wireless Messaging is the ideal solution for secure SMS communications.

#### Easy Usage

SMS is easy to use and can be integrated into virtually any standard e-mail environment, or application output. There are no new applications needed on the desktop. Simply address to SMS and send. Lotus Notes, Microsoft Exchange or Novell GroupWise users specify the service as "SMS" and send (Example: 01727227434@SMS). The addressing automatically designates the provider and non-confirmations can be delivered back to the users inbox.

#### Central Administration

The administration of the SMS solution is automated within the Communication Server One. The SMS box needs only a network connection and a point of reception within the building. No firewall or no virus protection is necessary, making it easy to install and to use.

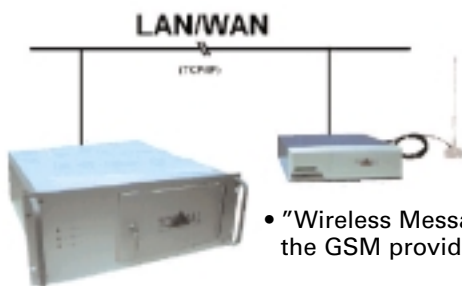
#### Customised Services

SMS provides a new range of broadcasting and alerting opportunities to companies. TOPCALL's customised SMS services make it possible to generate SMS messages from virtually any application or database. For example automated "Push-messages" can be generated from SAP (or any application environment) and sent via SMS to notify customers of payments due.

# SMS Short Message Service

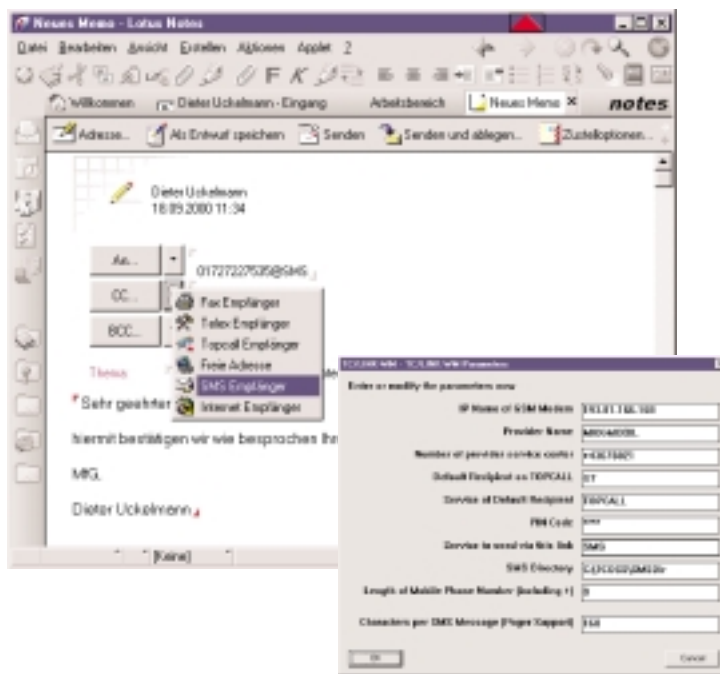


## Short Message Service – Wireless Messaging



- "Wireless Messaging" directly to the GSM provider
- No firewall and no virus protection necessary

- Easy-to-use, central administration
- Adjustable number of the supported SMS signs



- Intuitive addressing out of Microsoft Outlook, Lotus Notes, Novell GroupWise and other mail systems
- Optional address template through client extensions